

A full-featured communications solution including instant messaging, VoIP and video chat capabilities, and much more



Lotus software

IBM Lotus Foundations Reach

Find, reach, and work together like never before!



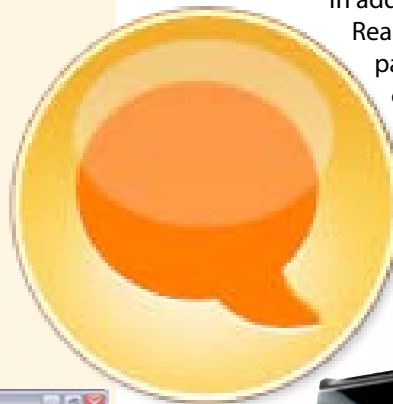
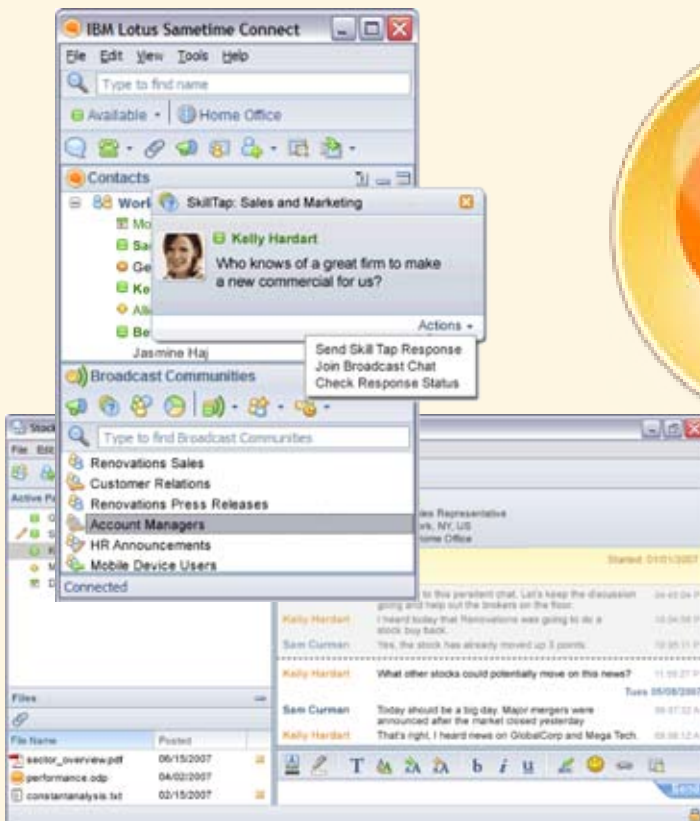
IBM Lotus Foundations™ Reach brings together everything a business needs - hardware, software, and services - to provide a complete business solution with a robust communications experience, all from a single, simple user interface. We help your people connect and work together in real time to be more effective, make quick, informed decisions, and achieve better business outcomes.

Leveraging award-winning IBM Lotus Sametime technology, Lotus Foundations Reach is an optional add-on for Lotus Foundations Start. Together, they offer an integrated, full-featured small business solution that enables teams to use e-mail, create and share documents, use business applications, centrally manage files, store and secure business data, control access to information, connect offices and employees, and leverage valuable communications tools.

Finally, an all-in-one small business solution with communications capabilities as powerful as those used by large enterprises, but customized especially for the needs of smaller businesses. Capabilities Include:

- Secured instant messaging
- Rich text, time stamps, spell check and emoticons
- Multi-way chat
- Built-in VoIP and video chat
- Optional file transfer
- Integrated chat histories
- Location awareness
- Contact list with type-ahead and search
- Contact Business cards
- Extends to mobile devices so that people on the road can always stay connected

In addition, when combining Lotus Foundations Reach with a VoIP telephony solution, expanded features are available, including click-to-call, click-to-conference, presence awareness, voicemail access, the extension of service to mobile devices, and more.



Find information and connect with each other in real time, without the costs and complexities associated with traditional business communications solutions.

- Reduce e-mail storage costs by using Instant Messaging file transfer
- Make more informed decision-making by enabling employees to connect in real time with experts within the business
- Use video chat capabilities to bring together dispersed teams, thereby improving employee productivity and reducing the need for (and costs associated with) business travel
- Instant messaging and Voice over IP (VoIP) technology help reduce telephony, international long distance and roaming charges, and can lead to faster response times and improved productivity

Key Benefits of Lotus Foundations Reach:

- Instant access to people and information
- Increases the productivity of teams, regardless of geography
- Reduces the costs and complexities associated with traditional business communications
- Enables employees to get answers in a timely manner, eliminating delays from e-mail and phone tag
- Enables remote workforce, finding skilled resources wherever they are
- Keeps employees motivated and performing by providing them the tools they need to do their jobs faster and more efficiently
- Does not require a dedicated in-house IT resource
- Enables you to stay focused on your business instead of worrying about technology
- Provides help for organizations concerned about the security and compliance risks associated with the unmanaged use of public IM networks



© Copyright IBM Corporation 2009

Lotus Software
IBM Software Group
One Rogers Street
Cambridge, MA 02142
U.S.A.

Produced in the United States of America
08-09
All Rights Reserved

IBM, the IBM logo, and Lotus are trademarks or registered trademarks of International Business Machines Corporation in the United States, other countries or both.

Adobe is a registered trademark of Adobe Systems Incorporated in the United States, and/or other countries.

Microsoft and Windows are trademarks of Microsoft Corporation in the United States, other countries or both.

Linux is a registered trademark of Linus Torvalds in the United States, other countries or both.

Other company, product and service names may be trademarks or service marks of others.

References in this publication to IBM products and services do not imply that IBM intends to make them available in all countries in which IBM operates.

Media shot included in this documentation is for marketing purposes only, actual product media may differ.

The information contained in this documentation is provided for informational purposes only. While efforts were made to verify the completeness and accuracy of the information contained in this documentation, it is provided "as is" without warranty of any kind, express or implied. In addition, this information is based on IBM's current product plans and strategy, which are subject to change by IBM without notice. IBM shall not be responsible for any damages arising out of the use of, or otherwise related to, this documentation or any other documentation. Nothing contained in this documentation is intended to, nor shall have the effect of, creating any warranties or representations from IBM (or its suppliers or licensors), or altering the terms and conditions of the applicable license agreement governing the use of IBM software.

Audience: All